

# Protectli Appliance

## Protectli Vault 2.5G 4 Port - Intel J3710 (FW4C)

*September 30, 2022*

---

Protectli is the preferred source for small form factor computers in the United States, distributing worldwide. Protectli uniquely provides a trusted hardware platform with advanced firmware protection.

## Protectli Vault

### Open Source Ready



All Vaults are OS agnostic and support the popular open source firewall distros like pfSense, OPNsense, Untangle etc.

### Advanced Firmware



The Vault can be configured with coreboot, the open source BIOS for maximum security, transparency, and audit-ability (available post launch).

### Trusted Hardware



Compact, 100% silent and backed by our US-based support team: The Vault features Intel CPUs, SSDs throughout, and comes with up to 6 Ports.

### 4G LTE Failover



Never lose internet connectivity if you add the Protectli 4G LTE Modem for failover. Verizon, AT&T and T-Mobile plans are available, or provide your own SIM.

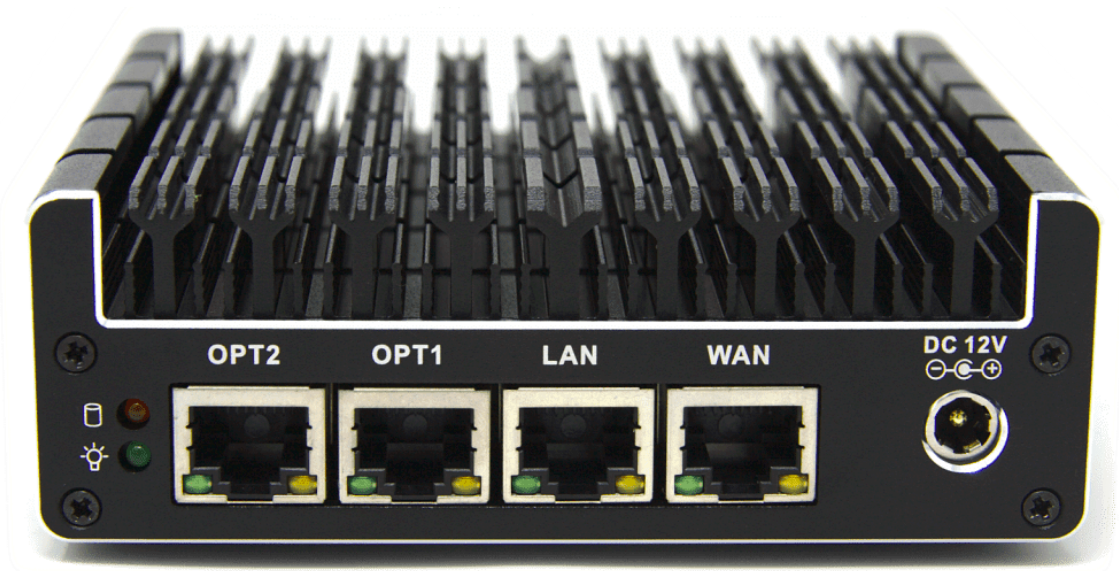
# FW4C-Series Data Sheet

<b>Model</b>	FW4C
<b>Description</b>	4x 2.5G Network Port Fanless Appliance
<b>Processor</b>	Intel J3710 (64 Bit, 1.6 GHz, 2MB L2 Cache)
<b>Processor Cores</b>	4
<b>Processor Threads</b>	4
<b>Intel AES-NI</b>	Supported
<b>Network</b>	4x Intel I225V 2.5G Ethernet, RJ-45
<b>Video / Graphics</b>	Intel Clear Video HD, 2x HDMI 1.4
<b>Audio</b>	Audio over HDMI, 1x 3.5mm Audio Jack
<b>Memory</b>	1x SO-DIMM DDR3L-1600, 1.35v, Max 8GB
<b>Storage</b>	1x mSATA
<b>Optional Storage</b>	1x Internal SATA 3.0 Data and Power Connector
<b>External I/O</b>	4x RJ-45 Ethernet 2x 3.0 USB 2x HDMI 1x RJ-45 COM 1x 3.5mm Audio Jack 1x 12V DC Power Jack 2x WiFi/LTE Antenna Mounting Holes
<b>Internal I/O</b>	1x MINI PCIe for mSATA 1x SATA, 1x SATA Power 1x Full Height mPCIe (USB) for WiFi or LTE 1x USB 2.0 Header 1x CMOS Reset (2 pin) 1x CPU Fan Header (4 pin) 1x Front Panel Header (9 pin)
<b>BIOS</b>	AMI or coreboot
<b>Indicators</b>	1x LED Power Button (Blue), 1x LED Power Indicator (Green), 1x LED Disk Activity Indicator (Red), 1x LED Disk Activity Indicator (Yellow)

<b>Power</b>	Input 12V DC, 1x DC Power Jack
<b>Power Usage</b>	Max 20W
<b>Chassis</b>	Fanless, Aluminum, Black
<b>Chassis Dimensions</b>	4.5 x 4.3 x 1.5 in, 115 x 107.5 x 39 mm
<b>Mounting Options</b>	Desktop, VESA Bracket, Optional 1RU Rack Mount
<b>Weight</b>	1.1 lbs, .50 Kg
<b>Shipping Weight</b>	2.8 lbs, 1.2 Kg
<b>Operating Temperature</b>	+14° - +122° F, -10° - +50° C
<b>Operating Humidity</b>	0 – 95% relative humidity, non-condensing
<b>Approvals</b>	UL (Power Supply), FCC Part 15 Class B, CE, RCM, RoHS
<b>Country of Origin</b>	Made in China. Assembled in USA.
<b>Optional WiFi</b>	1x mPCIe 802.11b/g/n (USB)
<b>Optional LTE Cellular</b>	1x mPCIe 4G LTE (USB)

---

## Front View



## Rear View

