

Protectli Firewall Appliances

Protectli Vault 6 Port - Intel i5 (FW6D)

Revised 02/07/2022

Protectli is the preferred source for firewalls in the United States, distributing worldwide. Protectli uniquely provides a trusted hardware platform with advanced firmware protection.

Protectli Vault

Trusted Hardware



Compact, 100% silent and backed by our US-based support team: The Vault features Intel CPUs, SSDs throughout, and comes with up to 6 Ports.

Open Source Ready



All Vaults are OS agnostic and support the popular open source firewall distros like pfSense, OPNsense, and OpenWRT.

Tested Software Compatibility



All Vaults are tested for compatibility with a variety of Operating Systems, supporting Windows, linux, *BSD, and hypervisors like Proxmox, XCP-NG and VMWare ESX.

4G LTE Failover



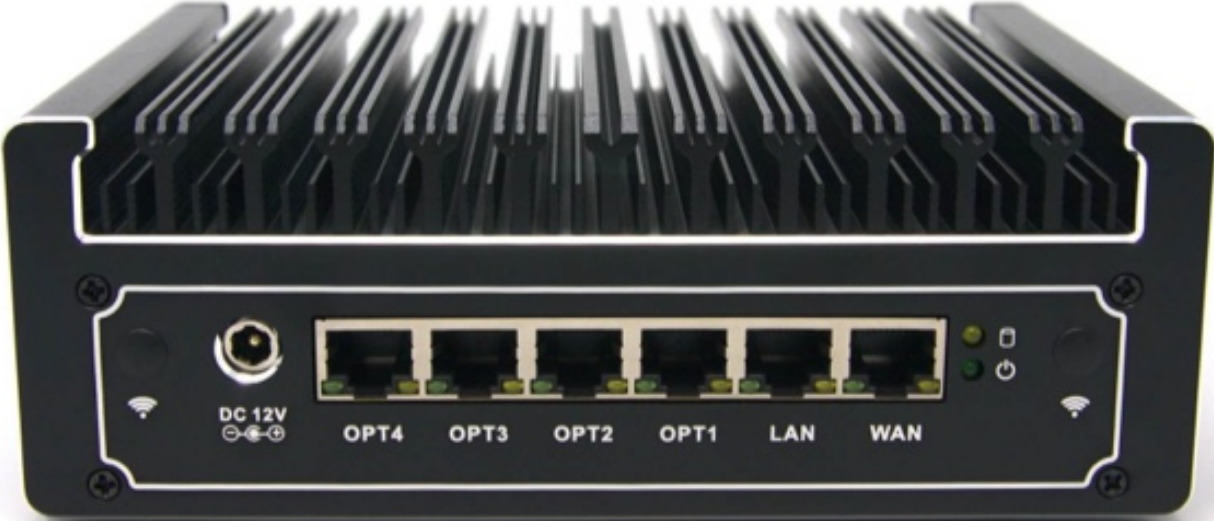
Never lose internet connectivity if you add the Protectli 4G LTE Modem for failover. Verizon and AT&T plans are available, or provide your own SIM.

FW6D-Series Data Sheet

Model	FW6D
Description	6 Network Port Fanless Appliance
Processor	Intel Kaby Lake R i5-8250U (64 Bit, 1.6GHz base, 3.4GHz Turbo, 6MB Intel Smart Cache)
Processor Cores	4
Processor Threads	8
Intel AES-NI	Supported
Network	6x Intel Gigabit Ethernet, RJ-45
Graphics	Intel Integrated UHD Graphics 620
Video	1x HDMI
Memory	2x SO-DIMM Dual Channel DDR4-2133/2400 (runs at 2133), Max 64GB
Storage	1x mSATA SSD, Max 1 TB
Optional Storage	1x Internal 2.5 in HDD
External I/O	6x Intel Gigabit Ethernet, RJ-45 4x 3.0 USB 1x HDMI 1x RJ-45 COM 1x 12V DC Power Jack 2x WiFi Antenna Mounting Holes
Internal I/O	2x SO-DIMM 1x MINI PCIe for mSATA 1x SATA 1x MINI PCIe only for optional Protectli WiFi Kit 1x CPU Fan Header
Wireless	Optional 802.11b/g/n WiFi Kit (Protectli P/N: WAP01K)
Indicators	1x LED Power Button (Blue) 1x LED Power Indicator (Green) 1x LED Disk Activity Indicator (Red)

Power	Input 12V DC
Power Usage	Idle: 20W; Max 60W
Chassis	Fanless, Aluminum, Black
Chassis Dimensions	184 x 127 x 63.5 mm, 7.25 x 5 x 2.5 in
Mounting Options	Desktop, VESA Bracket
Weight	3 lbs, 1.36 Kg
Shipping Weight	5.125 lbs, 2.32 Kg
Operating Temperature	-10° - +50° C, +14° - +122° F
Operating Humidity	0 – 95% relative humidity, non-condensing
Approvals	FCC Part 15
Country of Origin	Made in China. Assembled in USA.

Front View



Rear View

