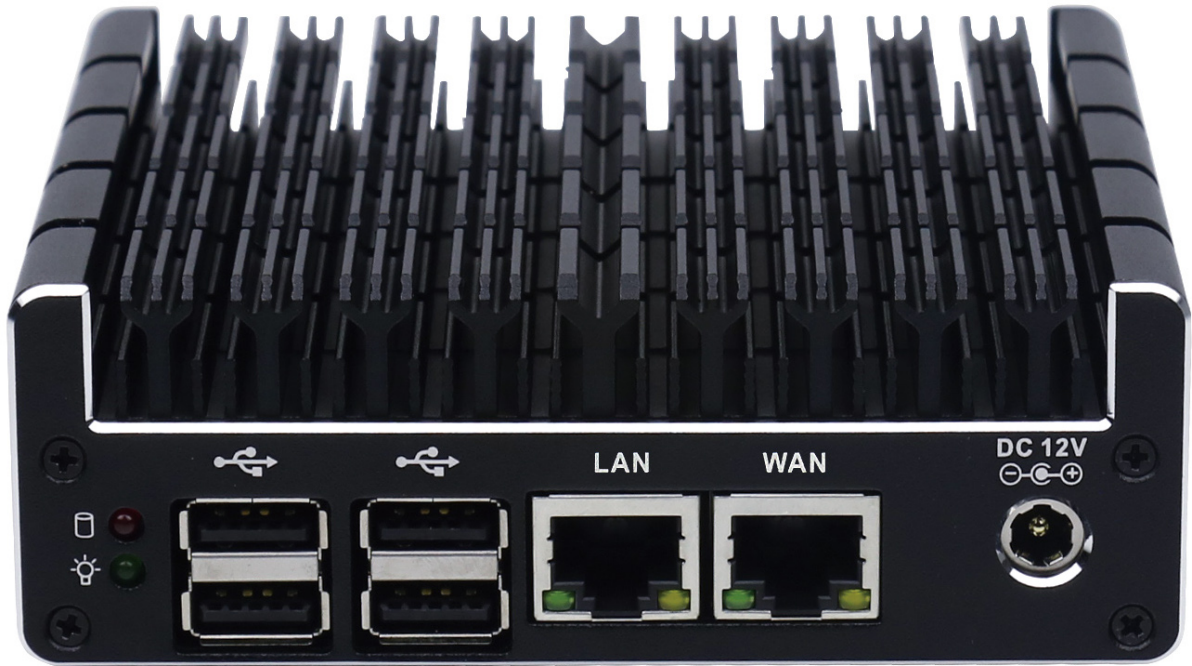


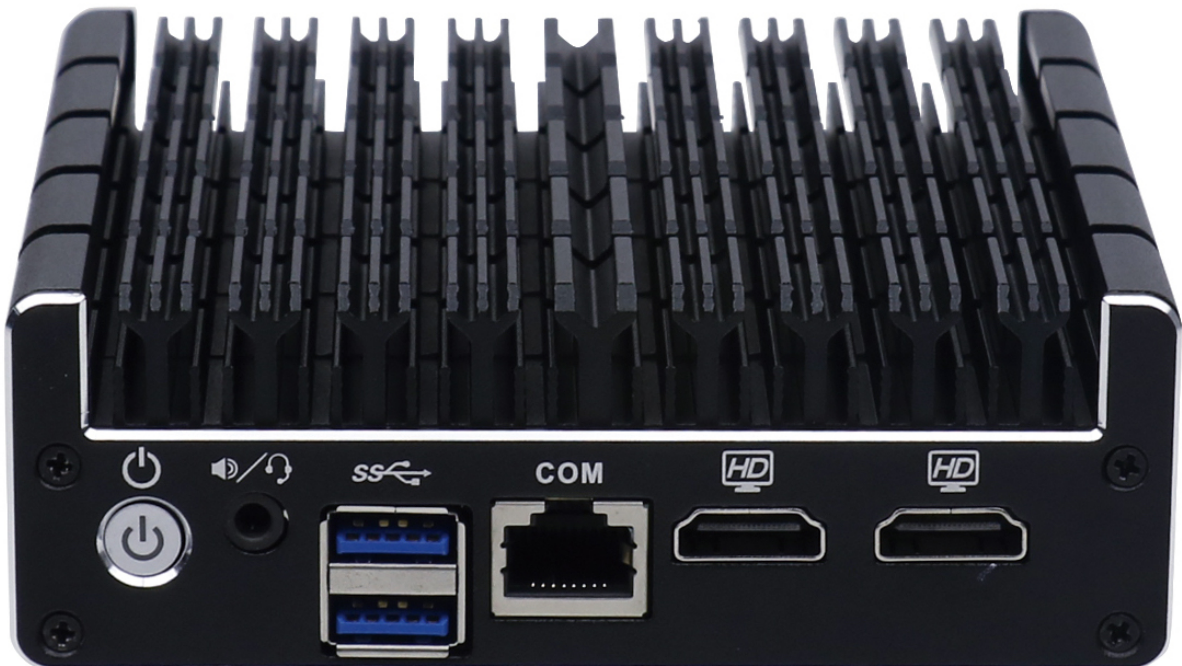


FW2B Series Datasheet

Model	FW2B
Description	2X 1 GbE Network Port Fanless Appliance
Processor	Intel J3060 (64 Bit, 1.6 GHz, Turbo 2.48 GHz, 2MB L2 Cache)
Processor Cores	2
Processor Threads	2
Intel AES-NI	Supported
Network	2x Intel i211-AT Gigabit Ethernet
Video / Graphics	Intel Clear Video HD Technology
Audio	Intel HD Audio Technology
Memory	1x SO-DIMM DDR3L-1600, 1.35v, Max 8GB
Storage	1x Mini SATA (mSATA)
Optional Storage	1x Internal SATA Connector
External I/O	2x RJ-45 Ethernet 2x 3.0 USB, 4x 2.0 USB 2x HDMI 1x RJ-45 COM 1x 3.5mm Audio Jack 1x 12V DC Power Jack
Internal I/O	1x SO-DIMM 1x MINI PCIe for mSATA 1x SATA Header
Wireless	Optional, PCIe WiFi or 802.11b/g/n WiFi Kit (Protectli P/N: WAP01K)
Indicators	1x LED Power Button (Blue) 1x LED Power Indicator (Green) 1x LED Disk Activity Indicator (Red)
Power	Input 12V DC
Power Usage	Max 12W
Chassis	Fanless, Aluminum, Black
Chassis Dimensions	4.5 x 4.3 x 1.5 in, 115 x 107.5 x 39 mm
Mounting Options	Desktop, VESA Bracket, Optional 1RU Rack Mount
Weight	1.1 lbs, .50 Kg
Shipping Weight	2.6 lbs, 1.2 Kg
Operating Temperature	+14° - +122° F, -10° - +50° C
Operating Humidity	5% – 95% relative humidity, non-condensing
Approvals	FCC Part 15



Front View



Rear View