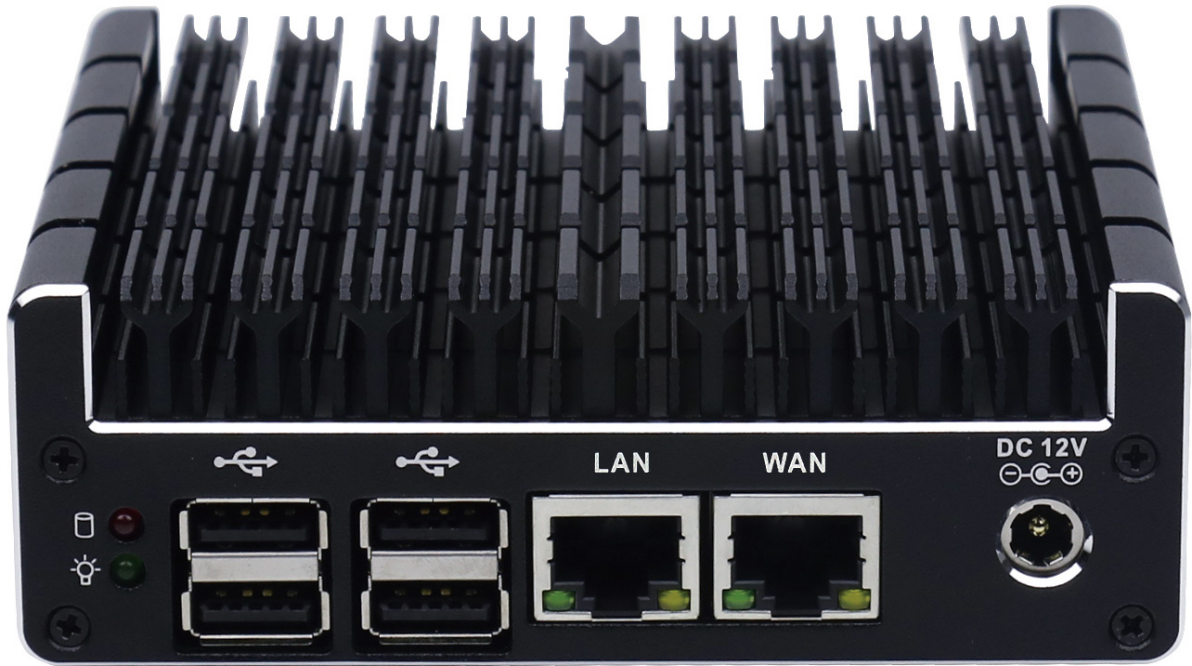


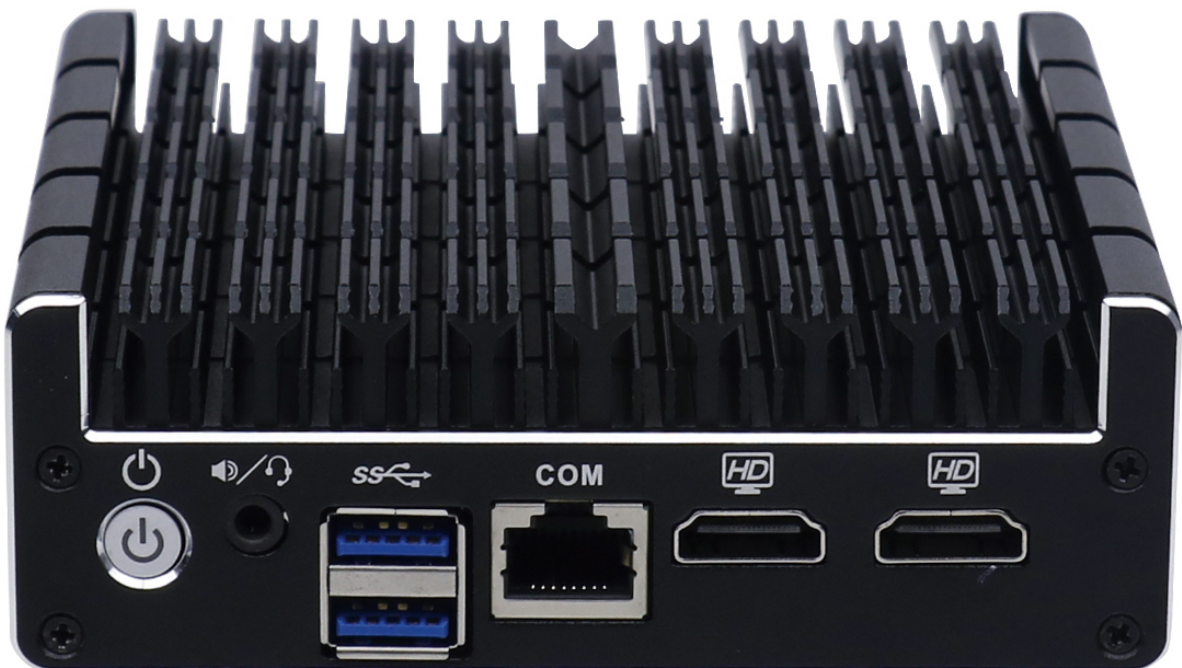


## FW2B Series Datasheet

<b>Model</b>	<b>FW2B</b>
<b>Description</b>	<b>2X 1 GbE Network Port Fanless Appliance</b>
<b>Processor</b>	<b>Intel J3060 (64 Bit, 1.6 GHz, Turbo 2.48 GHz, 2MB L2 Cache)</b>
<b>Processor Cores</b>	<b>2</b>
<b>Processor Threads</b>	<b>2</b>
<b>Intel AES-NI</b>	<b>Supported</b>
<b>Network</b>	<b>2x Intel i211-AT Gigabit Ethernet</b>
<b>Video / Graphics</b>	<b>Intel Clear Video HD Technology</b>
<b>Audio</b>	<b>Intel HD Audio Technology</b>
<b>Memory</b>	<b>1x SO-DIMM DDR3L-1600, 1.35v, Max 8GB</b>
<b>Storage</b>	<b>1x Mini SATA (mSATA)</b>
<b>Optional Storage</b>	<b>1x Internal SATA Connector</b>
<b>External I/O</b>	<b>2x RJ-45 Ethernet 2x 3.0 USB, 4x 2.0 USB 2x HDMI 1x RJ-45 COM 1x 3.5mm Audio Jack 1x 12V DC Power Jack</b>
<b>Internal I/O</b>	<b>1x SO-DIMM 1x MINI PCIe for mSATA 1x SATA Header</b>
<b>Wireless</b>	<b>N/A</b>
<b>Indicators</b>	<b>1x LED Power Button (Blue) 1x LED Power Indicator (Green) 1x LED Disk Activity Indicator (Red)</b>
<b>Power</b>	<b>Input 12V DC</b>
<b>Power Usage</b>	<b>Max 12W</b>
<b>Chassis</b>	<b>Fanless, Aluminum, Black</b>
<b>Chassis Dimensions</b>	<b>4.5 x 4.3 x 1.5 in, 115 x 107.5 x 39 mm</b>
<b>Mounting Options</b>	<b>Desktop, VESA Bracket, Optional 1RU Rack Mount</b>
<b>Weight</b>	<b>1.1 lbs, .50 Kg</b>
<b>Shipping Weight</b>	<b>2.6 lbs, 1.2 Kg</b>
<b>Operating Temperature</b>	<b>+14° - +122° F, -10° - +50° C</b>
<b>Operating Humidity</b>	<b>5% – 95% relative humidity, non-condensing</b>
<b>Approvals</b>	<b>FCC Part 15</b>



Front View



Rear View