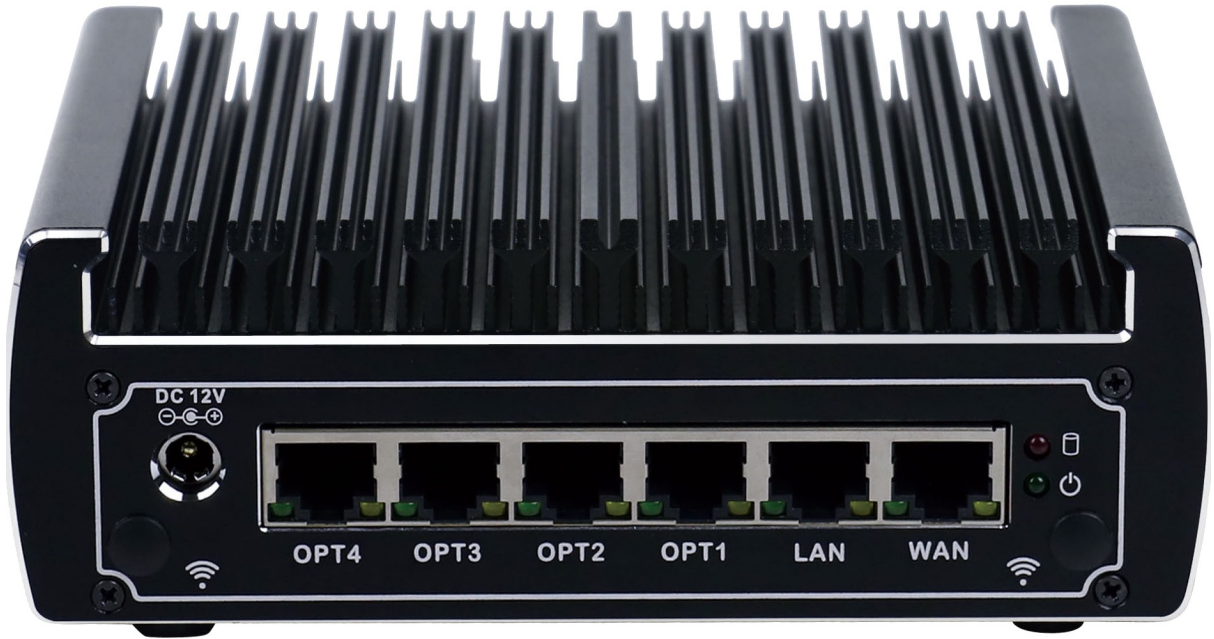


PROTECTLI

FW6B Series Datasheet

Model	FW6B
Description	6 Network Port Fanless Appliance
Processor	Intel Kaby Lake i3-7100U (64 Bit, 2.4 GHz, 3MB Smart Cache)
Processor Cores	2
Processor Threads	4
Intel AES-NI	Supported
Network	6x Intel 82583V Gigabit Ethernet
Graphics	Intel Integrated HD Graphics 620
Video	1x HDMI
Memory	2x SO-DIMM Dual Channel DDR4-2133/2400 1.2v, Max 2133 MT/s, Max 32GB
Storage	1x Mini SATA
Optional Storage	1x Internal 2.5" SATA 3.0
External I/O	6x RJ-45 Ethernet 4x 3.0 USB 1x HDMI 1x RJ-45 COM 1x 12V DC Power Jack 2x WiFi Antenna Mounting Holes
Internal I/O	2x SO-DIMM 1x MINI PCIe for mSATA 1x SATA 1x MINI PCIe only for optional Protectli WiFi Kit 1x CPU Fan Header
Wireless	Optional 802.11b/g/n WiFi Kit (Protectli P/N: WAP01K)
Indicators	1x LED Power Button (Blue) 1x LED Power Indicator (Green) 1x LED Disk Activity Indicator (Red)
Power	Input 12V DC
Power Usage	Max 30W
Chassis	Fanless, Aluminum, Black
Chassis Dimensions	155 x 126.5 x 52.5 mm, 6.1 x 5 x 2 in
Mounting Options	Desktop, VESA Bracket
Weight	2.25 lbs, 1.0 Kg
Shipping Weight	3.75 lbs, 1.7 Kg
Operating Temperature	-10° - +50° C, +14° - +122° F
Operating Humidity	0 – 95% relative humidity, non-condensing



Front View



Rear View